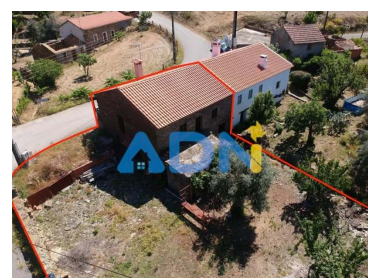





## Sarzedas - Villa



 <b>2</b>	 <b>1</b>	 <b>400</b>	 <b>290</b>	<b>77 000 €</b>
Bedrooms	Bathrooms	Area (m <sup>2</sup> )	Land Area (m <sup>2</sup> )	(EUR €)

## Restored schist house with 2 bedrooms and land

Charming schist villa, recovered, with land of 290 m2 with fruit trees.

This villa, located in a village where calm and tranquility prevail, is developed on two floors. A basement that is at the same level as the backyard and a ground floor.

The villa consists of 70cm wide schist stone walls, ideal for coping with hot summer days and cold winter days, with a cement tile roof and floors, with double-glazed aluminium windows and doors.

To heat the environment, there is a fireplace with cassette and stove in the living room, and the water is heated by an electric cylinder.

The compartmentalization of the house is as follows:

T +351 961109000 (chamada rede móvel nacional) · T +351 938455511 (chamada rede móvel nacional) · E

ins@adn@gmail.com  
Rua Conselheiro de Albuquerque, 4 - Cave  
AMI 17938 | Intermediário Crédito N°0007025

<sup>1</sup> (Call to national fixed network) | <sup>2</sup> (Call to national mobile network)



124070

Reference

Scan the QR code to view the property



Ground floor: Living room with fireplace, bedroom 1 with terrace, bedroom 2, bathroom and stairs to the basement;

Basement: Storage and kitchen/laundry;

The backyard has excellent accessibility for vehicles, as the road is at the same level as this. In the backyard, we also have a second storage space. This yard is properly delimited by fence and stone walls, and you can find fruit trees, such as loquat trees, blackthorns, mandarin trees, cherry trees, apple trees, pomegranate trees, vines and an olive tree.

If you are looking for the quality of life that only a schist house in a Beira town can offer you, this property is for you. Welcome and enjoy all the natural wonders that only you can find here.

Distances:

Ribeiro: 5 minutes (walk);

River beaches: 5 and 10 minutes (car);

Sarzedas: 10 minutes (car);

Castelo Branco: 25 minutes (car);

If you need more information, talk to your ADN and schedule your visit.  
ADN REAL ESTATE - SERVE WELL TO SERVE ALWAYS!

## Property Features

- Fireplace
- Proximity: Open field, Public Transport
- Floors: 2
- Basement
- Views: Countryside views, Mountain views, Garden view
- Septic tank
- Central location
- Energetic certification: D
- Renovation year: 2012
- Garden
- Built year: 1937
- Drive way
- Storage / utility room
- Double glazing
- Quiet Location
- Closed fireplace
- Mains water
- Terrace

T +351 961109000 (chamada rede móvel nacional) · T +351 938455511 (chamada rede móvel nacional) · E

imobiliaria.adn@gmail.com  
Rua Conselheiro de Albuquerque, 4 - Cave  
AMI 17938 | Intermediário Crédito Nº0007025

<sup>1</sup> (Call to national fixed network) | <sup>2</sup> (Call to national mobile network)